

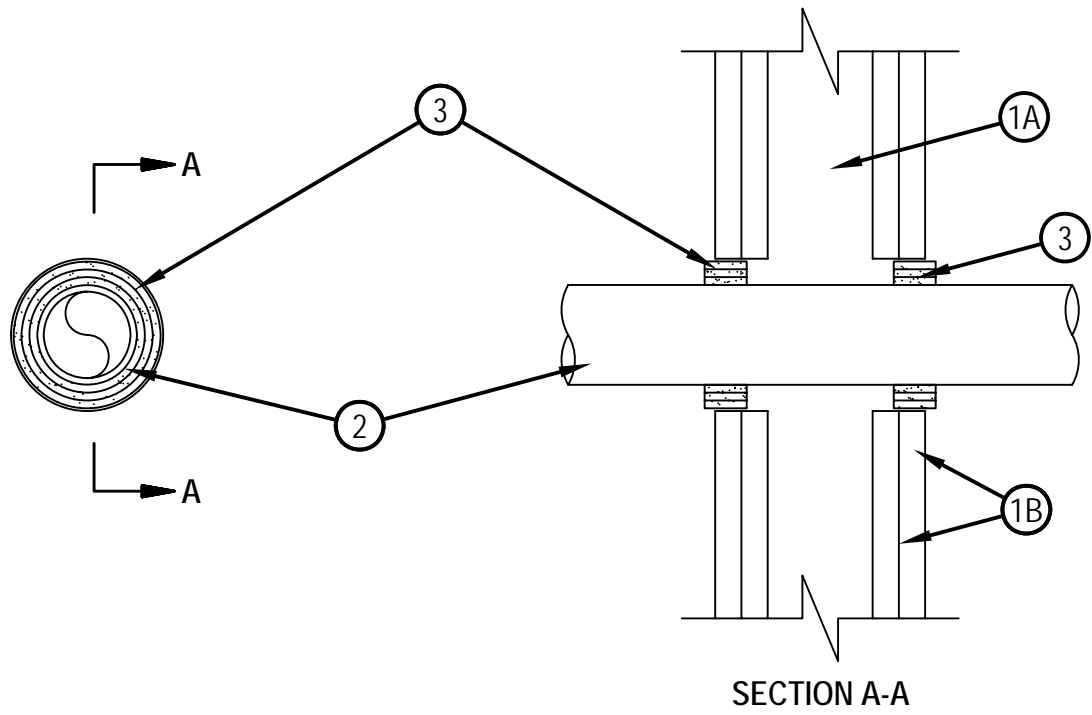


Classified by
Underwriters Laboratories, Inc.
to UL 1479

System No. W-L-2234

F Rating - 2 Hr
T Rating - 1 Hr

WL 2234



1. Wall Assembly -- The fire-rated gypsum wallboard/stud wall assembly shall be constructed of the materials and in the manner specified in the individual U300 or U400 Series Wall and Partition Designs in the UL Fire Resistance Directory and shall include the following construction features:

A. Studs -- Wall framing may consist of either wood studs or steel channel studs. Wood studs to consist of nom 2 by 4 in. lumber spaced 16 in. OC. Steel studs to be min 2-1/2 in. wide and spaced max 24 in. OC.

B. Gypsum Board* -- Two layers of nom 5/8 in. thick gypsum wallboard, as specified in the individual Wall and Partition Design. Max diam of opening is 3-5/8 in.

2. Through-Penetrants -- One nonmetallic pipe or conduit centered within the firestop system. A nom annular space of 5/8 in. is required in the firestop system. Pipe to be rigidly supported on both sides of floor or wall assembly. The following types and sizes of nonmetallic pipes may be used:

A. Polyvinyl Chloride (PVC) Pipe -- Nom 2 in. diam (or smaller) Schedule 40 cellular or solid core PVC pipe for use in closed (process or supply) or vented (drain, waste or vent) piping system.

B. Chlorinated Polyvinyl Chloride (CPVC) Pipe -- Nom 2 in. diam (or smaller) SDR 13.5 CPVC pipe for use in closed (process or supply) piping system.

C. Acrylonitrile Butadiene Styrene (ABS) Pipe -- Nom 2 in. diam (or smaller) Schedule 40 cellular or solid core ABS pipe for use in closed (process or supply) or vented (drain, waste or vent) piping system.

3. Fill, Void or Cavity Material* -- Wrap Strip -- Nom 3/16 in. thick by 1 in. wide intumescent wrap strip. The wrap strip is continuously wrapped around the outer circumference of the pipe three times and slid into annular space approx 3/4 in. such that approx 1/4 in. of the wrap strip protrudes from the wall surface. When multiple wrap strips are used to achieve the required total length, the ends are to be butted end-to-end and held in place with tape. Wrap strips are installed on each side of wall.

HILTI CONSTRUCTION CHEMICALS, DIV OF

HILTI INC -- CP648-E W25/1" Wrap Strip

*Bearing the UL Classification Mark



Hilti Firestop Systems

Reproduced by HILTI, Inc. Courtesy of
Underwriters Laboratories, Inc.

APRIL 22, 2005