

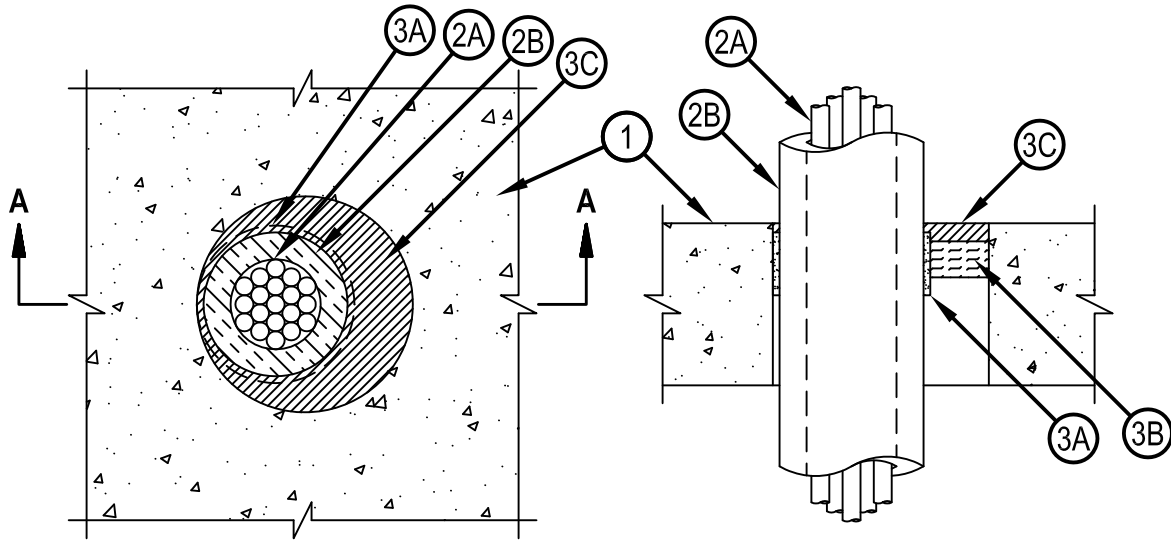


Classified by
Underwriters Laboratories, Inc.
to UL 1479

System No. C-AJ-2468

F Rating -- 2 Hr
T Rating -- 1-1/2 Hr

CAJ 2468



SECTION A-A

1. Floor or Wall Assembly — Min 4-1/2 in. (114 mm) thick reinforced lightweight or normal weight (100-150 pcf or 1600-2400 kg/m³) concrete. Wall may also be constructed of any UL Classified Concrete Blocks*. Max diam of opening is 6 in. (152 mm).
See Concrete Blocks (CAZT) category in the Fire Resistance Directory for names of manufacturers.
2. Through Penetrant - Beverage Line — Nom 4 in. (102 mm) diam (or smaller) insulated beverage line for use in closed (process or supply) piping systems, installed concentrically or eccentrically within the opening. The annular space between penetrant and periphery of opening shall be min 3/16 in. (4.6 mm) to a max 1-13/16 in. (46 mm). Penetrant to be rigidly supported on both sides of floor or wall assembly. The beverage line shall consist of the following components:
 - A. Nonmetallic Tubing — A max of twelve nom 1/2 in. (13 mm) diam polyethylene (PE) tubing or crosslinked polyethylene (PEX) tubing, tightly bundled.
 - B. Tube Insulation - Plastics+ — Max 3/4 in. (19 mm) thick acrylonitrile butadiene/polyvinyl chloride (AB/PVC) flexible foam furnished in the form of tubing. The insulation is to be tightly secured around the bundled tubing with adhesive supplied with tube insulation.
See Plastics (QMFZ2) category in the Plastics Recognized Component Directory for names of manufacturers. Any Recognized Component tube insulation material meeting the above specifications and having a UL 94 Flammability Classification of 94-5VA may be used
3. Firestop System — The firestop system shall consist of the following:
 - A. Fill, Void or Cavity Material* - Wrap Strip — Nom 3/16 in. (4.6 mm) thick by 1-3/4 in. (44 mm) wide intumescent wrap strip. Min one layer of wrap strip tightly wrapped around the outer circumference of the beverage line with the ends tightly butted and held in place with masking tape or aluminum tape. Wrap strip to be slid into the annular space such that the top edge of the wrap strip shall be recessed 1/4 in. (6 mm) from the top surface of the floor. In walls, the wrap shall be installed on both surfaces of the wall such that the outer edge of the wrap strip is recessed 1/4 in. (6 mm) from each side of the wall.
HILTI CONSTRUCTION CHEMICALS, DIV OF HILTI INC — CP 648E Wrap Strip
 - B. Packing Material — Min 1 in. (25 mm) thickness of 4 pcf (64 kg/m³) mineral wool batt insulation tightly packed into the opening as a permanent form. Packing material to be recessed from top surface of floor or both surfaces of the wall to accommodate the required thickness of fill material.
 - C. Fill, Void or Cavity Material - Caulk — Min 1/2 in. (13 mm) thickness of fill material applied within the annulus flush with the top surface of the floor or both surfaces of the wall.
HILTI CONSTRUCTION CHEMICALS, DIV OF HILTI INC — FS-ONE Sealant or FS-ONE MAX Intumescent Sealant.

* Indicates such products shall bear the UL or cUL Certification Mark for jurisdictions employing the UL or cUL Certification (such as Canada), respectively.



Hilti Firestop Systems

Reproduced by HILTI, Inc. Courtesy of
Underwriters Laboratories, Inc.
January 09, 2015